



What to do with Surplus School Sites??



Presentation Summary

1. Brief Background
2. The Opportunities
3. The Benefits
4. The Challenges



Background

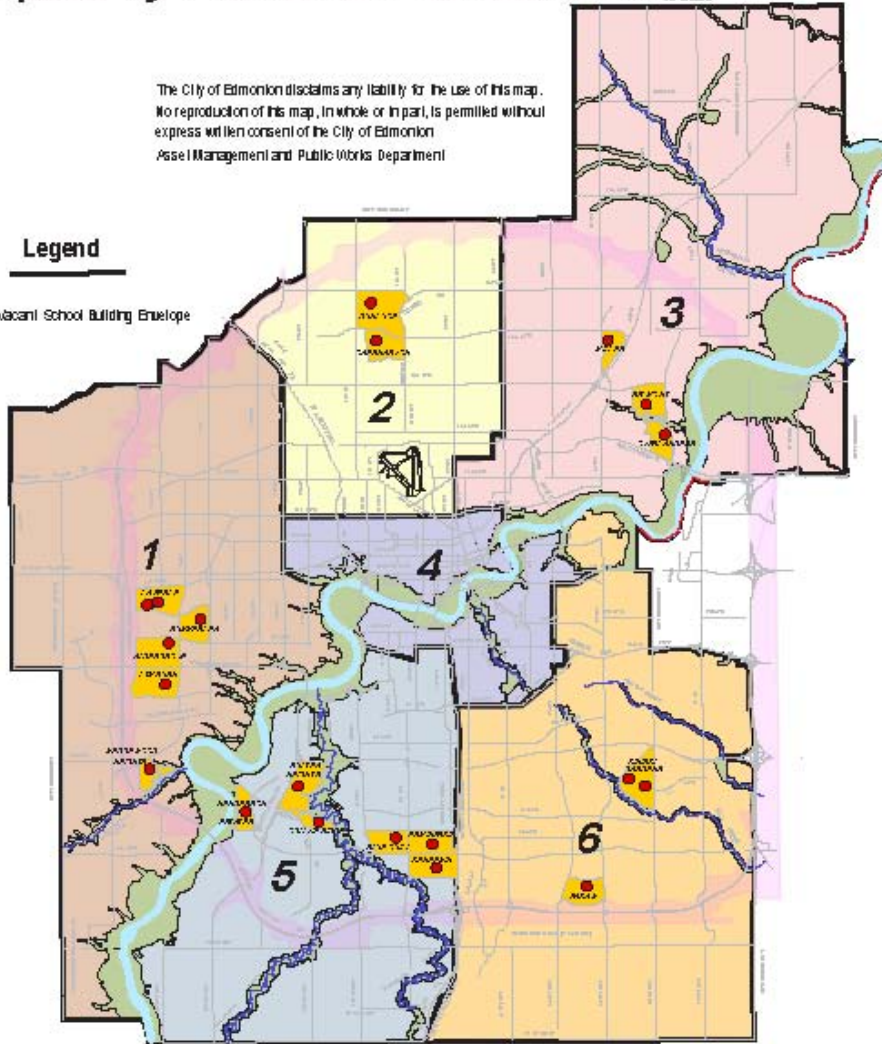
1. City and School Board collaborate to plan & manage shared sites
2. What is changing?
 - Need for schools
 - MGA revisions
 - Joint Use Agreement new direction
3. Surplus Declarations
 - 20 vacant sites declared surplus by School Boards

Vacant School Sites Declared Surplus by Edmonton School Boards

The City of Edmonton disclaims any liability for the use of this map. No reproduction of this map, in whole or in part, is permitted without express written consent of the City of Edmonton Asset Management and Public Works Department

Legend

- Vacant School Building Envelope



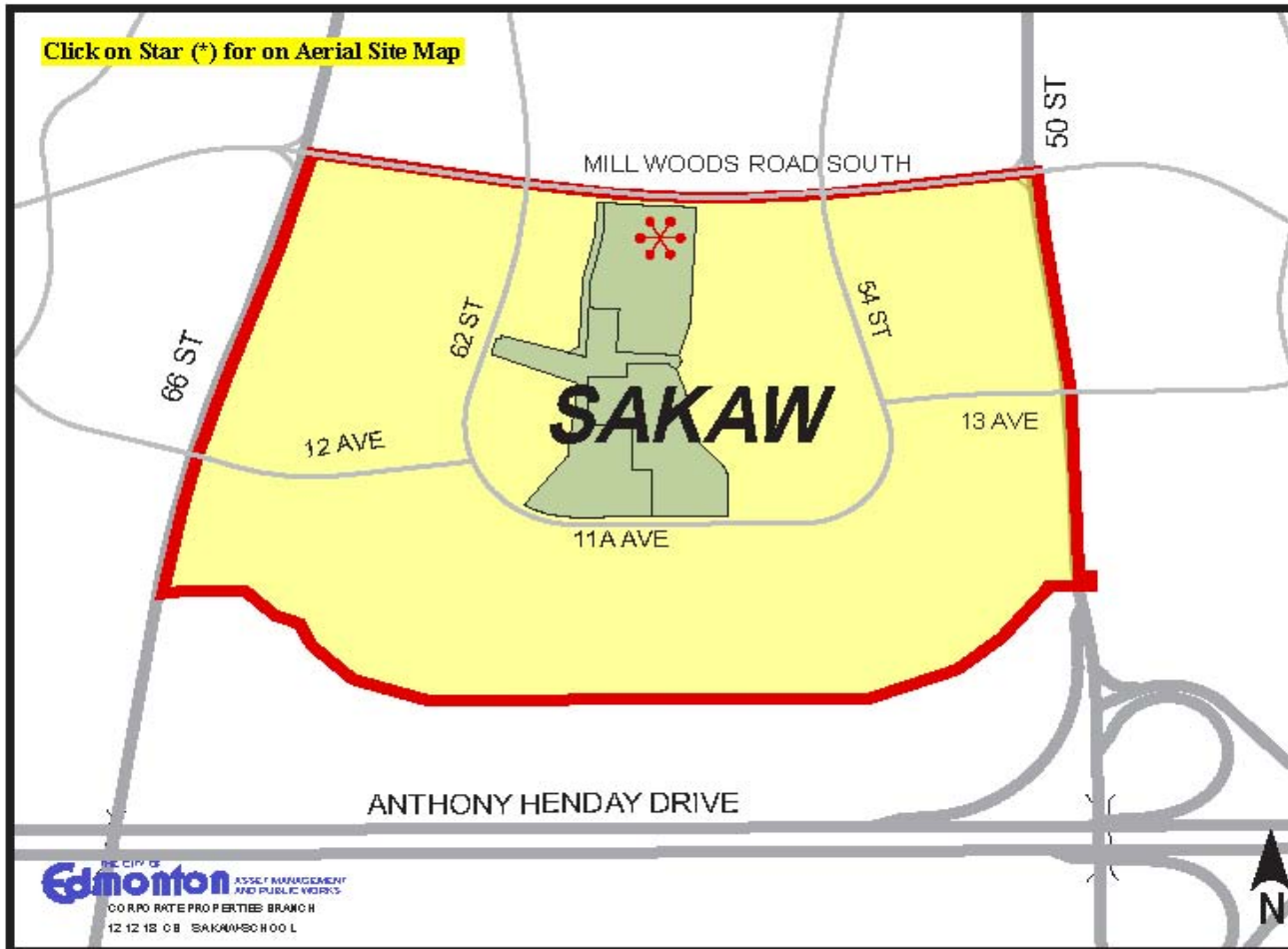
Created : December 2009
 Data : City of Edmonton
 Created by :
 Asset Management and Public Works Department
 Corporate Properties Branch

Note : This information is provided for reference purposes only. Precise location of surplus school building envelope within the vacant school site to be confirmed.

Opportunity

- Current 20 sites
- Doughnut distribution
- Sites located between inner city & growth areas

Opportunity: Site Characteristics



- Sites located within established neighbourhoods
- Located along transit route
- Adjacent to other schools & open space

Opportunity: Site Characteristics

Sakaw



- Only vacant building portion of site declared surplus
- Building envelope only (1.0 – 1.5 ha size)
- Valuable corporate assets & opportunity



Benefits

- Breathing life into Council's vision
- Addressing current or future civic needs
- Creating opportunities for private sector or non-profit groups



Challenges

- Now

- Helping public understand change
- Financial impacts on the City
- Challenges managing this change

- Soon

- A more proactive City approach to realize benefits associated with surplus school sites is needed

- Later

- Need to prepare communities for school change when plans are created