

**National Executive
Forum on Public
Property**

Program Delivery: Defining and Achieving Goals

May 25, 2007



Presentation Overview

- BC Hydro at a Glance
- BC Hydro's Values, Purpose & Goals
- How BC Hydro Defines its Goals
- Aligning Service Delivery to Strategy
- BC Hydro Organizational Structure
- Case Example: The Energy Plan
- Q&A

BC Hydro at a Glance

- Commercial Crown corporation owned by the Province of BC and regulated by an independent body
- One of North America's leading providers of clean, renewable energy
- One of the largest electric utilities in Canada, serving more than 1.7 million customers in an area containing over 94% of BC's population
- Operates 30 hydroelectric facilities and 3 natural gas-fuelled thermal power plants
- Generates between 43,000 and 54,000 gigawatt hours of electricity annually, depending on prevailing water levels
- Delivers electricity mainly through an interconnected system of over 74,000 kilometres of transmission and distribution lines
- 3,778 square kilometres or .4% of BC's land area is either owned or managed by BC Hydro

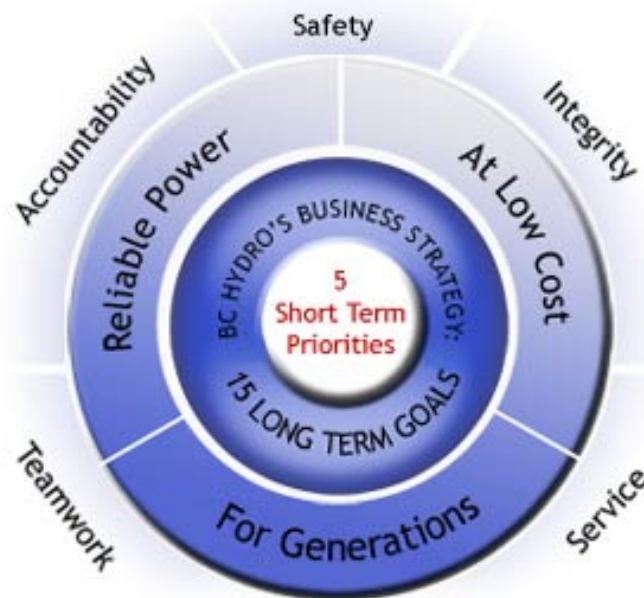
http://www.bchydro.com/rx_files/info/info3519.pdf

Reliable power, at low cost, for generations. Reliable power, at low cost, for generations. Reliable power, at low cost, for generations. Reliable power, at low cost, for generations.

BChydro 

3

BC Hydro's Values, Purpose & Goals



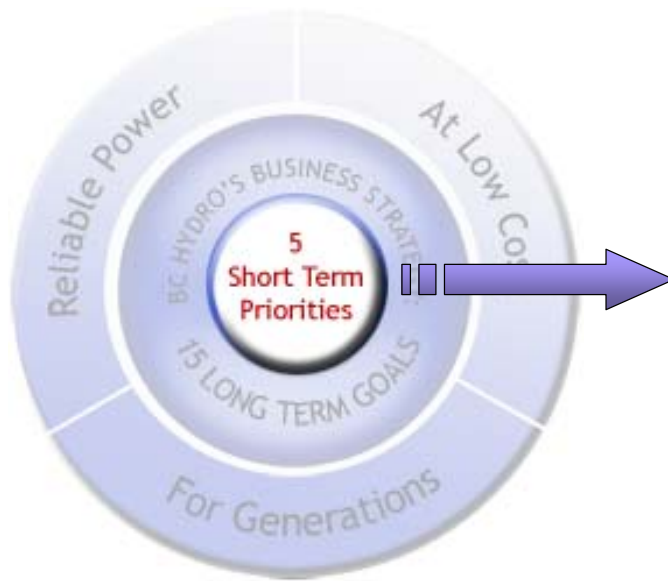
http://www.bchydro.com/rx_files/info/info51192.pdf

Reliable power, at low cost, for generations. Reliable power, at low cost, for generations. Reliable power, at low cost, for generations. Reliable power, at low cost, for generations.

BChydro 

4

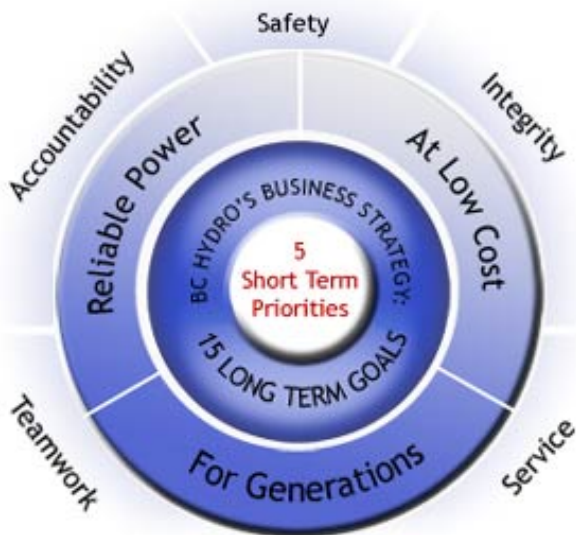
BC Hydro's Priorities



- Safety
- Reliability (Customer and Supply)
- Financial Targets
- Customer Satisfaction
- People

Reliable power, at low cost, for generations. Reliable power, at low cost, for generations. Reliable power, at low cost, for generations. Reliable power, at low cost, for generations.

How BC Hydro Defines its Goals



BC Hydro Board

Provincial Government

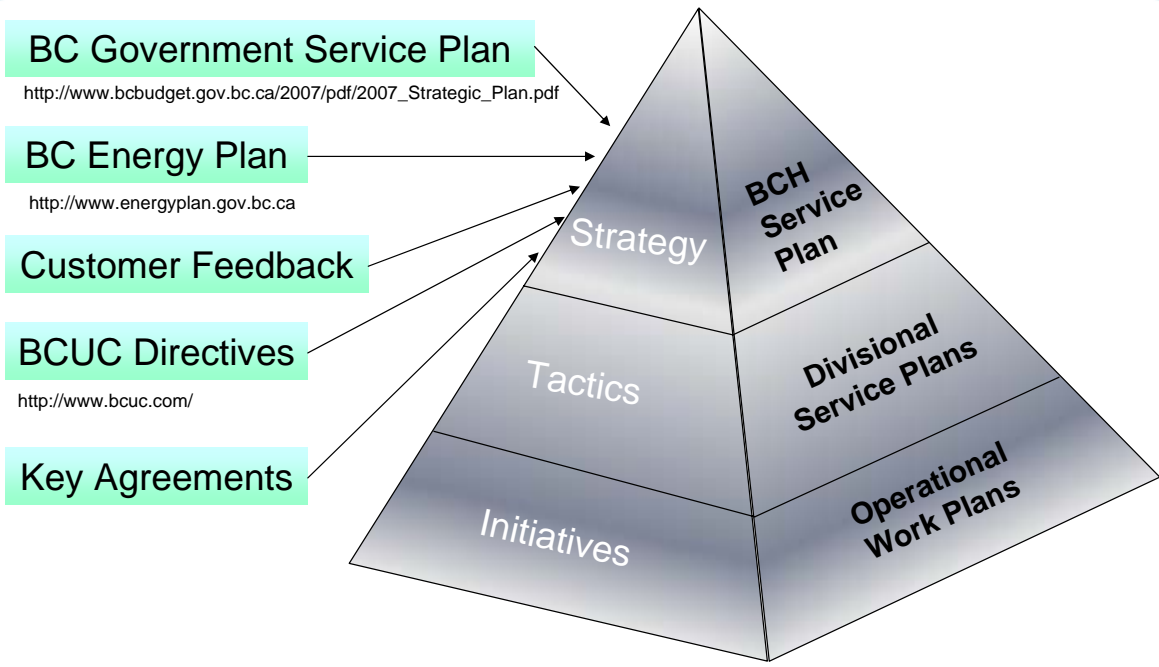
BCUC (Regulator)

Customers

Key Partners

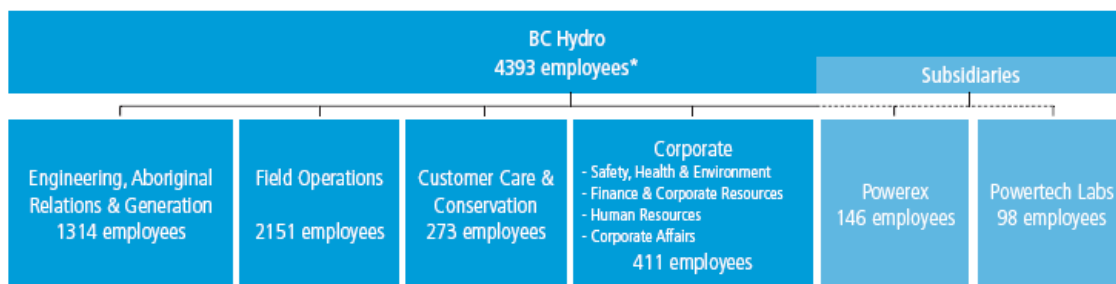
Reliable power, at low cost, for generations. Reliable power, at low cost, for generations. Reliable power, at low cost, for generations. Reliable power, at low cost, for generations.

Aligning Service Delivery to Strategy



Reliable power, at low cost, for generations. Reliable power, at low cost, for generations. Reliable power, at low cost, for generations. Reliable power, at low cost, for generations.

BCH Organizational Structure

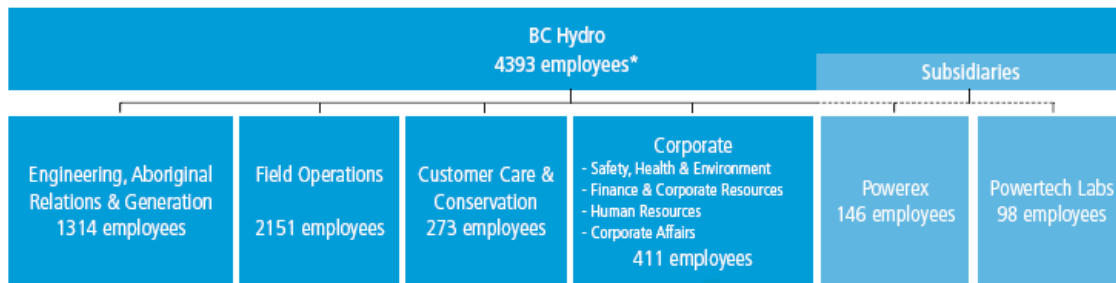


*total number of employees as of December 31, 2006 as per BC Hydro's latest Service Plan http://www.bchydro.com/rx_files/info/info51192.pdf

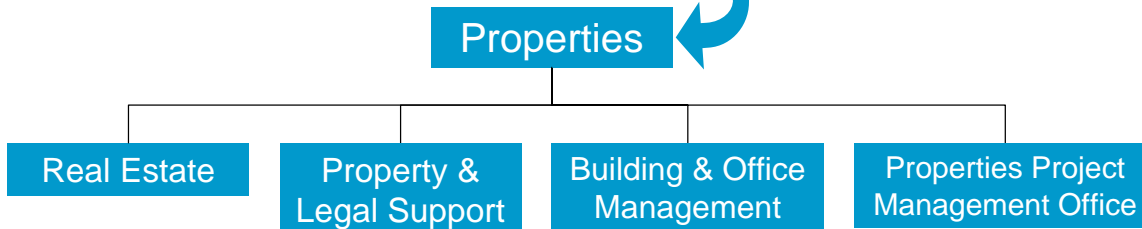


Reliable power, at low cost, for generations. Reliable power, at low cost, for generations. Reliable power, at low cost, for generations. Reliable power, at low cost, for generations.

BCH Organizational Structure



*total number of employees as of December 31, 2006 as per BC Hydro's latest Service Plan http://www.bchydro.com/rx_files/info/info51192.pdf



Reliable power, at low cost, for generations. Reliable power, at low cost, for generations. Reliable power, at low cost, for generations. Reliable power, at low cost, for generations.

Case Example: The Energy Plan (for discussion purposes only)

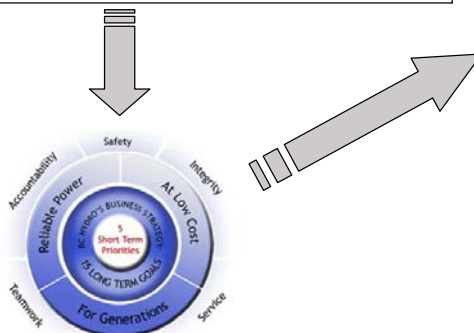
The BC Energy Plan

A Vision for Clean Energy Leadership

- Environmental leadership
- Energy conservation and efficiency
- Energy security
- Investing in innovation

BCH LONG-TERM GOALS

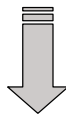
- Environmental Impact
- Energy conservation and efficiency
- Remote Community Electrification
- Reliability (Supply)
- Workplace
- Safety
- First Nations
- Innovation and Technology
- Stakeholder Engagement



Reliable power, at low cost, for generations. Reliable power, at low cost, for generations. Reliable power, at low cost, for generations. Reliable power, at low cost, for generations.

Case Example: The Energy Plan (for discussion purposes only)

Energy Plan Policy	Properties Initiative
Implement energy efficient building standards by 2010	BC Hydro Building Design Standards
Public sector buildings will be required to integrate environmental design	Field Buildings Rebuilding / Refurbishment
Attract and retain workers by ensuring workplaces are safe, fair, and healthy	Strategic Space Review (Corporate Campuses)



Workplace Transformation Initiative (WTI)

Reliable power, at low cost, for generations. Reliable power, at low cost, for generations. Reliable power, at low cost, for generations. Reliable power, at low cost, for generations.

WTI: Environmental Impact & Electricity Conservation and Efficiency

- Significant reductions in energy consumption at facilities throughout BC Hydro
- Ensure all work takes into account greenhouse impacts and mitigate and reduce the impacts as appropriate
- Alignment or accreditation with the appropriate green certification standards in every aspect of design and renovation
 - > currently conducting a LEED survey at the Edmonds and Dunsmuir campuses
 - > Port Hardy being built to LEED Gold alignment
- Support business continuity where appropriate, through building and site design

Reliable power, at low cost, for generations. Reliable power, at low cost, for generations. Reliable power, at low cost, for generations. Reliable power, at low cost, for generations.

WTI: Workplace (People)

- Create safe, healthier, more aesthetically pleasing environments
 - > Increase employee satisfaction with workplace
 - > Increase opportunities for attraction and retention
- Create working environments which meet employee functional needs
- Encourage teamwork through more collaborative work environments
- Support alternative work practices (e.g. telecommuting and shared workspaces) where appropriate

Reliable power, at low cost, for generations. Reliable power, at low cost, for generations. Reliable power, at low cost, for generations. Reliable power, at low cost, for generations.

WTI: Safety

- Upgrade workplace environments to only house Green products wherever possible
- Ensure building and furniture seismic compliance standards throughout the province
- Ensure Worksafe BC compliance at all sites
- Ensure ongoing preventative maintenance programs are in place
- Upgrade building and site security
- Increase security measures

Reliable power, at low cost, for generations. Reliable power, at low cost, for generations. Reliable power, at low cost, for generations. Reliable power, at low cost, for generations.

WTI: Innovation and Technology

- Upgrade technology including: video and web conferencing, wireless where appropriate, network upgrades and network security
- Define and employ records management policies and practices to become more paperless and efficient
- Increase opportunities for communication with field
 - > Enable distributed training opportunities
 - > Enhance recruitment effectiveness

Reliable power, at low cost, for generations. Reliable power, at low cost, for generations. Reliable power, at low cost, for generations. Reliable power, at low cost, for generations.

Questions?



Reliable power, at low cost, for generations. Reliable power, at low cost, for generations. Reliable power, at low cost, for generations. Reliable power, at low cost, for generations.