



Parks
Canada

Parcs
Canada

Canada

Parks Canada

National Executive Forum on Public Property

May 30th, 2008



What Is Parks Canada?

- Land holdings represent 65% of total federal government
- 244, 540 km² of land –roughly half the size of Yukon
- 7000 land use agreements
 - Leases, licenses, concessions, permit agreements
 - 1200 transactions are processed annually as a result of these land use agreements
- More than \$11 billion in built assets
- 3700 buildings
 - Historic structures, offices, visitor centres, visitor facilities, staff residences, warden cabins
- 6700 Employees (50% are seasonal and/or students)
- 32 regions from coast to coast to coast.

Organizational Structure Field Units



What Is Parks Canada?

- 42 national parks



What Is Parks Canada?

➤ 157 national historic sites administered by Parks Canada including 9 historic canals



Fort St James National Historic Site

What Is Parks Canada?

- Three marine conservation areas
- Agreement for up to 4 others in progress



What Is Parks Canada?

- Contributes to the protection of:
 - 176 heritage railway stations
 - 38 heritage rivers
 - 11 grave sites of Prime Ministers
 - 1350 federal heritage buildings



Integrated Mandate

- *Protection*
- *Education*
- *Visitor Experience*



Parks Canada's Mandate

On behalf of the people of Canada, we protect and present nationally significant examples of Canada's natural and cultural heritage and foster public understanding, appreciation and enjoyment in ways that ensure their ecological and commemorative integrity for present and future generations.

What else ?

- 1,025 KM of through highways
- 457 vehicular bridges
- 331 trail structures
- 357 dams
- 745 potable water systems
- 739 waste water systems
- Fleet of more than 1600 vehicles and 300 vessels

Asset Condition

- OAG Report (2003) Historical Assets
 - 40% *fair*
 - 20% *poor*
- PCA (2003) Corporate Plan
 - 30% *good*
 - 40% *fair*
 - 30% *poor*

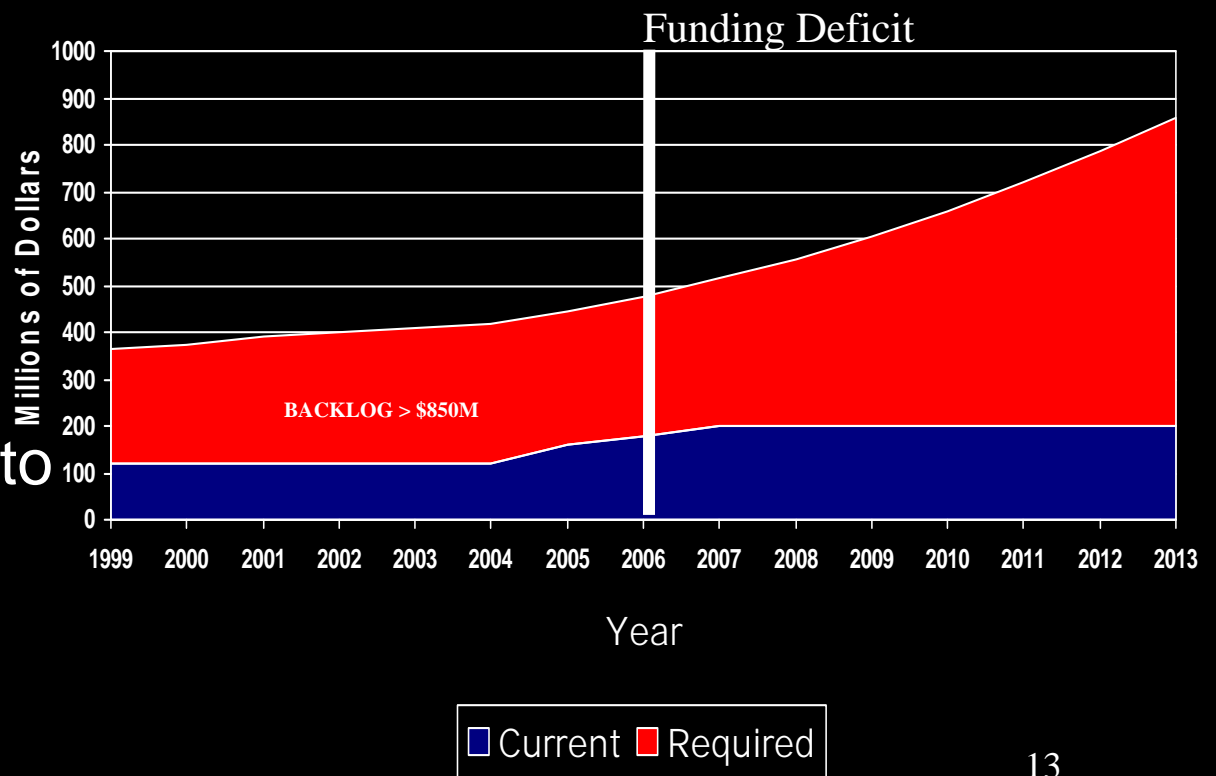


Budget 2005

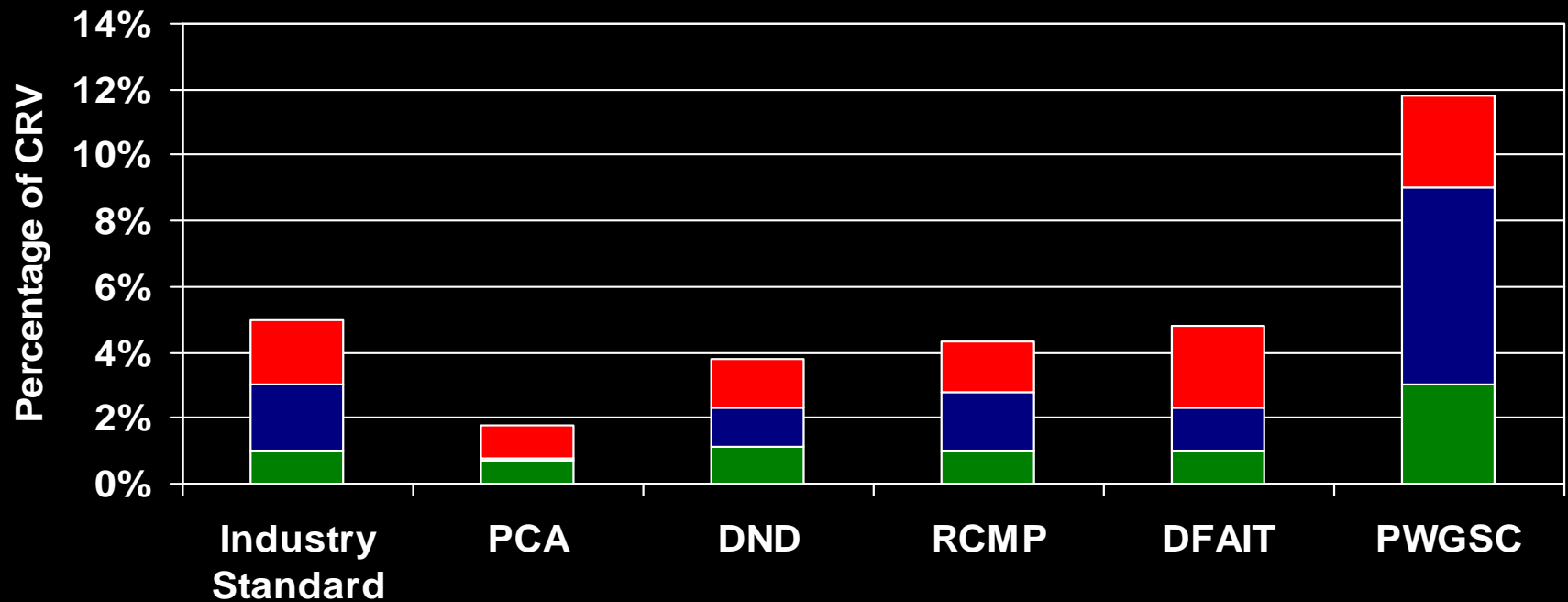
- TB submission in 2005 requesting an additional recapitalization funding of \$75M annually.
- *“Chronic underfunding has resulted in significant asset deterioration, risking the delivery of Parks Canada’s programs, visitor satisfaction, the permanent loss of cultural assets of national significance and public and staff safety.”*

Funding Levels

- Still underfunded today
- Current funding level does not address growing backlog of work estimated at \$600M and expected to reach \$850M in 2013



Funding Comparisons



Industry Standard
■ OPERATIONS
 ■ MAINTENANCE
 ■ RECAPITALIZATION

2% CRV – maintenance

2% CRV – recapitalization

1% CRV – operations

Options

- Seek additional funding
- Divestiture of non-core assets
- Align Real Property expenditures with Parks Canada mandate by asset priority

Aligning RP Expenditures

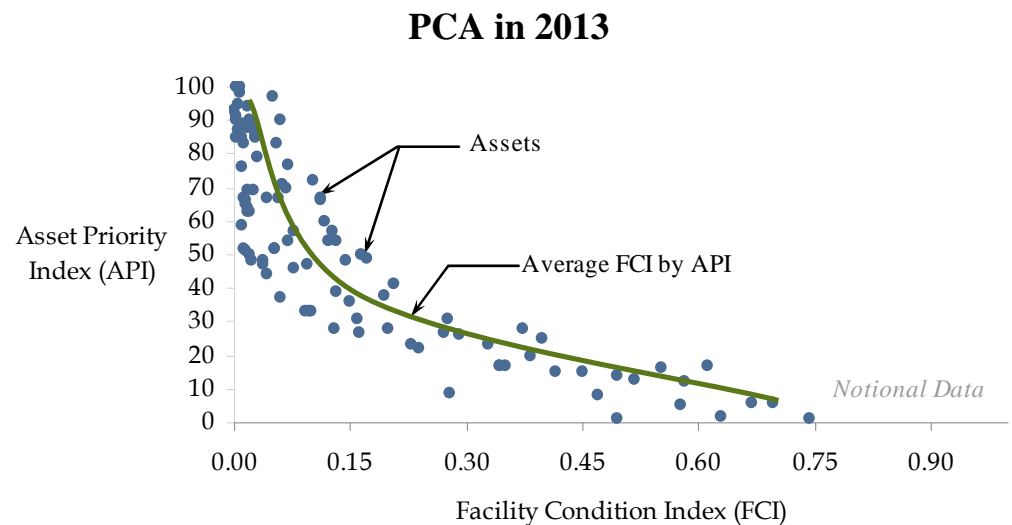
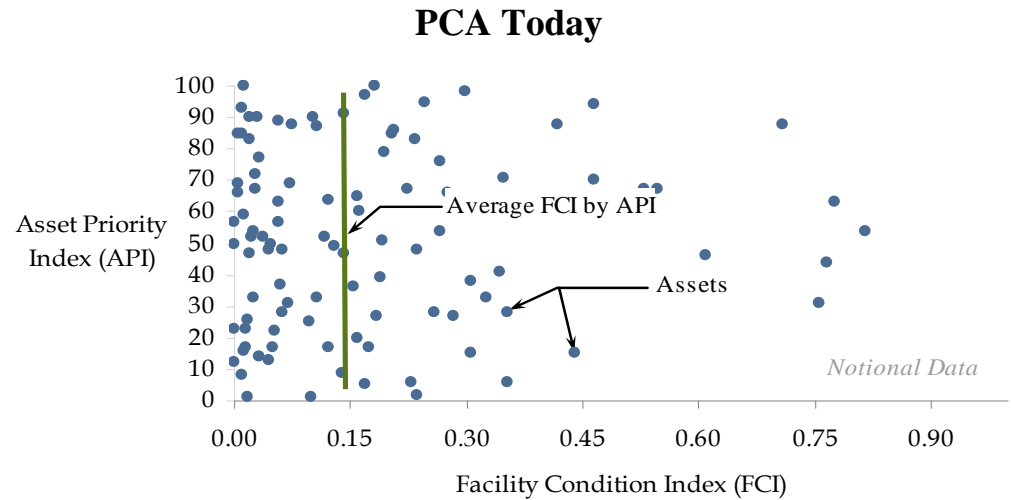
- **Facility Condition Index (FCI)**

- *Industry Standard*
- *Used extensively by the US NPS*
- *Rating of the condition*

$$FCI = \frac{\text{Value of Deferred Work}}{\text{Current Replacement Value}}$$

- **Asset Priority Index (API)**

- *Importance of the asset for the mandate of the organization*
- *Relative scoring of assets from 0-100*





Thank you!

